

How to Series / Track Installation Guide Click Rail System

General

- 1) Click Rail track is structurally rigid and is not meant to bend, yet the track must be fully engaged with all wall-mounting clips in order to maintain full weight bearing capacity. Particularly with the Click Rail system, walls should be quite linear. Review the wall segment that is planned to receive the track. Check that the wall is linear. Extra care should be given to brick and other walls surfaces made of smaller elements that may be out of alignment to the overall wall structure.
- 2) Generally speaking, AS Hanging Systems track may be mounted to gypsum wall-board (dry wall), lathe and plaster, brick, masonry block and a variety of other wall surfaces. The fasteners used for your particular application is determined by the wall surface and structure backing the surface. AS Hanging Systems supplies wood screws and plastic screw anchors that are suitable for mounting the track to wall-board, lathe and plaster and structural lumber. Additional fastener sets are available. It is the responsibility of the installer to select the correct fastener for a particular installation. Failure to do so may cause property damage and/or personal injury.
- 3) Failure to use the correct fasteners and a full compliment of fasteners will reduce the weight carrying capacity of the track. Please see "Weight Support Guide", a publication of AS Hanging Systems. This document may be freely downloaded at www.ASHanging.com
- 4) Note: Because of the ingenious design of the Click and Connect clip, the clip "self locates". If you are mounting the Click Rail track immediately below the ceiling, an existing crown molding, or other horizontal barrier, simply slide the clip up against the barrier and fasten it with the appropriate fastener.

Standard Exposed Installation

- 1) Align a length of track in the location where is to be mounted. This will allow you to check for fit and length. If your installation plan has the track mounted below and against a horizontal barrier, you will not require guidelines. See "Preparation and Tips" #2 above and skip to installation step #3 below.
- 2) If your application will have the track mounted away from barriers you will benefit from a guideline. You may use the track as a straight edge or snap a chalk line directly on the wall. In either situation, a bubble or laser level will help ensure it is horizontally level.
- 3) With the track location identified and marked, locate the first Click and Connect clip approximately 0.5-inch from the end of track. Fasten it in place. This 0.5-inch setback will facilitate a Corner Connector or End Cap, if needed. See illustrations #1 & #2.

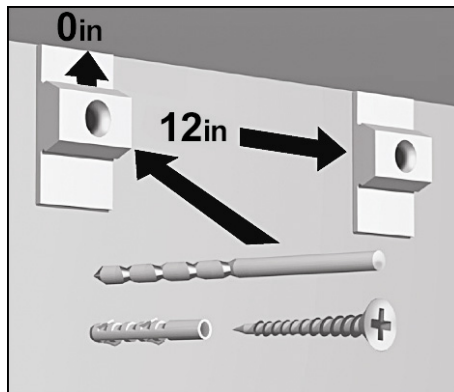


Illustration #1

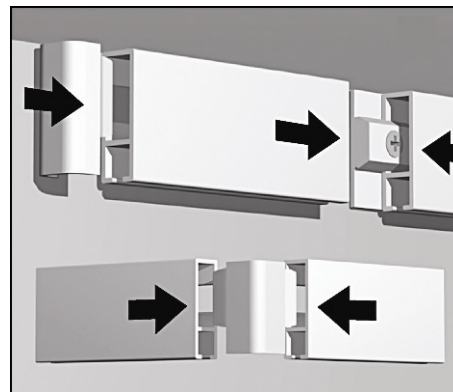


Illustration #2

- 4) Move 12 inches further down the track and place/fasten another mounting clip. Continue along the entire length of track, placing a clip every 12 inches. If you will finish the end of the track with either an End Cap or a Corner Connector, the last clip should also be mounted approximately 0.5-inch from where the track will end. See illustrations #1 and #2.
- 5) When mounting an adjoining track adjacent to an earlier track, the last Click and Connect clip of the first track should be mounted so that half of it is exposed beyond the track end. This will allow the next track to nicely align with the first. See illustration #2. To custom fit a length of track less than a full length, use a hack saw or other saw capable of cutting soft metals. Click Rail track is made of aluminum.

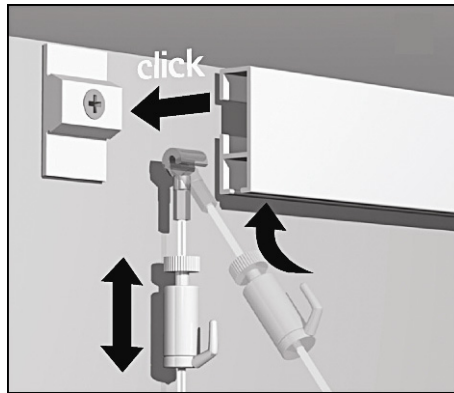


Illustration #3

- 6) Use Corner Connectors to “wrap” the track around both inside and outside corners. Corner Connectors are available in white, grey and black. If your plan will use Corner Connectors, place the connectors on the track before mounting the track.
- 7) Click the track over the Click and Connect clips, which have been mounted to the wall. See illustration #3.
- 8) Finish exposed outside ends of Click Rail track with End Caps. End Caps are available in white, grey and black.

Click Rail System Track Removal

- 1) Do not attempt to remove Click Rail track while anything is suspended from the track.
- 2) Starting at either end of the track, place a pair of putty knives atop one another and slide the blades beneath the track immediately adjacent to a mounting clip. The putty knives should be a minimum of 2 inches wide. Use the putty knives to pry the track off the mounting clip. If more leverage is required, force a flathead screwdriver blade between the blades of the two putty knives. You will hear and feel the track dislodge from the mounting clip. Move to each mounting clip in similar fashion to release the track.

Hidden Installation – Newly Installed Crown Molding

- 1) There are many ways to mount a Click Rail track so that it appears as another reveal of an adjacent crown molding or in fact “disappears” behind a crown molding. See illustrations #4 and #5.

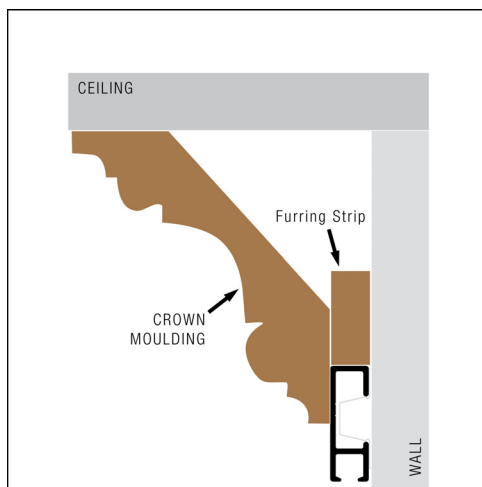


Illustration #4

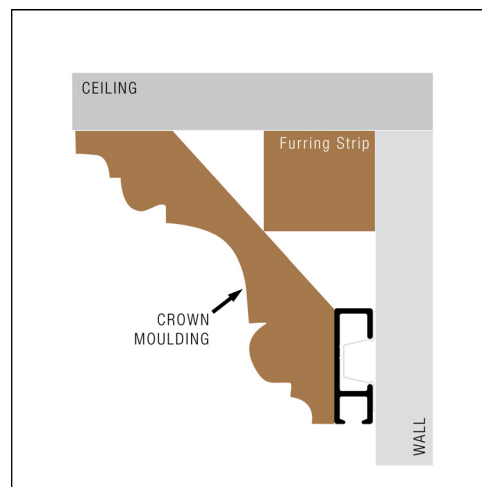


Illustration #5

- 2) Illustration #4 shows a track mounted behind a newly installed molding but partially exposed. In this way the track appears as part of the molding. The amount of track left visible is optional. Track found in Tube #2 (#9.6152) is powder coated with a white matte finish (primer painted) so that it may be easily painted to match the finish of adjacent trim. Otherwise, one might use track found in Tube #1, (#9.6151), which is powder coated in a white semi-gloss finish to best match the most common wood trim finishes.
- 3) Illustration #5 depicts a track that has been hidden behind a crown molding, and flush mounted with the lower edge of the molding. It is important to never recess the lower edge of Click Rail track as this will make it impossible to insert Grip-End cables and hang objects from the track.
- 4) Mounting trim molding over Click Rail track may also be accomplish in a number of methods. A piece of lathe (or batten, or furring strip) 3/8-inch thick can be deployed as a filler to build up the void to the same level as the Click Rail track. This strip can act as a “nailer”. See illustration #4. Alternatively, see illustration #5, a larger “nailer” could be used to support the mid-portion of the molding and the lower edge of the crown molding could be attached to the Click Rail track using an appropriate adhesive.

Matched Installation – Pre-existing Crown Molding

- 1) It is common that Click Rail track will need to be installed on a wall that has pre-existing crown molding. See illustration #6. In this situation simply mount the Click Rail track as you would if it were placed against the ceiling. See illustrations #1 - #3. See above instructions titled “Standard Exposed Installation” on page 3.

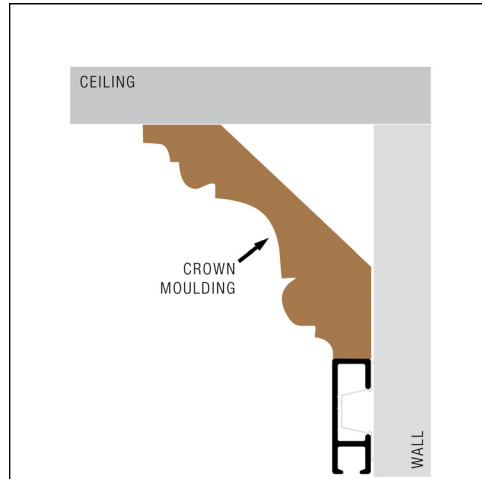


Illustration #6